

# JMD DESIGNS

Janet M. Davies - New Zealand  
“Snowy Owl” JMD707



I am told that Snowy Owl birds have light brown patches for the first two years. I have used Anchor Variegated Multi Pearl thread with marble shades to reflect that. This little guy has pure white snow-flakes fluttering around him, as he sits on a branch with leaves. Here you can learn how to stitch suspended beads in open areas. Beads are also sewn in the intersections of Kloster blocks to bring the design alive. The instructions have been written as if you have had experience with Hardanger kloster blocks already. The size of the above design shown in the photo on 25 count fabric is 13cm (5 inches).

Copyright Janet M. Davies 2007. <mailto:janet@jmdesigns.co.nz>  
View and purchase more designs at [www.jmdesigns.co.nz](http://www.jmdesigns.co.nz) and [www.masterstitch.co.uk](http://www.masterstitch.co.uk)

**General Stitching** (for owl and snowflakes):

Variegated Multi Pearl 5 cotton - Anchor 1302.

Pearl 5 cotton - White

Beige six stranded cotton - DMC 841

White seed beads.

Tapestry needle and Beading needle.

Using a 25 count fabric cut your fabric 25cm (10 inches) square. I used Variegated Pearl 5 for kloster blocks and wrapping and six stranded cotton for sewing on beads and back stitching around eyes and beak.

**General Stitching:**

1. Stitch the kloster blocks for the owls body. Use Variegated Pearl 5 thread.
2. Stitch the Satin stitch for the owl's head and eyes. Use Variegated Pearl 5 thread.
3. Stitch Holbein stitch around the eyes and the beak. Use 2 strands of the beige stranded cotton. See the red lines on the chart for where Holbein stitch is stitched.
4. Satin stitch the branch and leaves below the owl. Use White Pearl 5 thread.
5. Satin stitch the snowflakes around the owl. Use White Pearl 5 thread.
6. Sew 4 beads inside each intersection of the 4 kloster blocks on the wings. Use 1 strand of beige stranded cotton.
7. Sew 4 beads in the centre of each eye. Use 1 strand of beige stranded cotton.
8. Sew 4 beads in the centre of the large snowflakes and 2 beads in the centre of the small snowflakes. Use 1 strand of beige stranded cotton.
9. Inside the inner tummy shape of kloster blocks cut along the edge of each kloster block and remove fabric threads; leaving a fabric thread grid.
10. Wrap each fabric bar inside the tummy area with 4 wraps of Variegated Pearl 5 thread.
11. Attach the beads in the cut out and wrapped areas. The bead sits in the centre of a wrapped bar square, but some corners will have kloster blocks also. Below instruction are as if there is 3 kloster blocks and one woven edge as in the top left hand open area on the right hand photo. Use 1 strand of beige stranded cotton.

- A. Bring the beading needle up through fabric at the top left hand corner of a kloster block; in the middle of the white fabric area.
- B. Thread bead onto the needle and thread.
- C. Bring needle down in the bottom right hand side of the Kloster block, in the middle of the white fabric area.
- D. Weave thread towards the left inside the wrapped bar through its back. Then bring up at the corner of the left hand bottom kloster; in the middle of the white fabric area.
- E. Now thread your needle through the centre of the bead already there.
- F. Take thread down through fabric at the top right hand corner of the Kloster block; in the middle of the white fabric area.



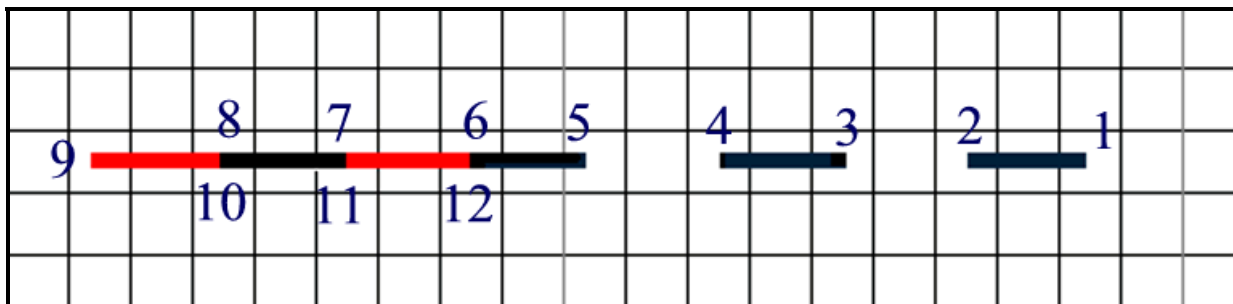
### **Buttonhole Edging** (for a mat):

If you are going to do buttonhole edging around a mat I suggest if using 25 count fabric that you use a pearl 8 cotton thread for the Buttonhole stitching itself. Also beads can be sewn in the intersections of the kloster block edging like what has been done on the owls wings.

### **Holbein Stitch:**

~ Make 1 Holbein over 2 fabric threads. 1 square on your graph equals 2 fabric threads.

1. Start by bringing the needle up through the fabric at 1.
2. Then down at 2. Now up at 3.
3. Then continue along going up and down with finishing going down at 8.
4. Turn the fabric 180 degrees and bring the needle up at 9.
5. Now come down at 10, at the same time piercing the stitch made at 8.
6. Now come up at 11. Then continue along going up and down to make a continuous row of stitching.



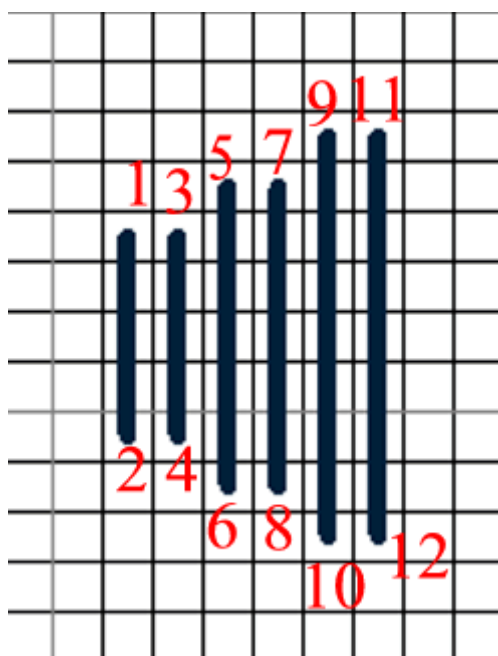
## **Satin Stitch**

In this design Satin stitch is used when stitching with your Pearl 5 Cotton. Use 1 strand of cotton. 1 square on the graph equals 2 fabric thread.

1. Bring the needle up at 1 and then down at 2.
2. Then up at 3 and then down at 4.
3. Carry along in the same fashion.

Never stitch across as in up at 1 and then down at 3.

Tension: If your fabric puckers this means your tension is too tight. If the satin stitches sit with a slight bend your tension is too loose. If you can see bigger holes in the fabric where your stitching thread has gone through the fabric your tension is too tight.

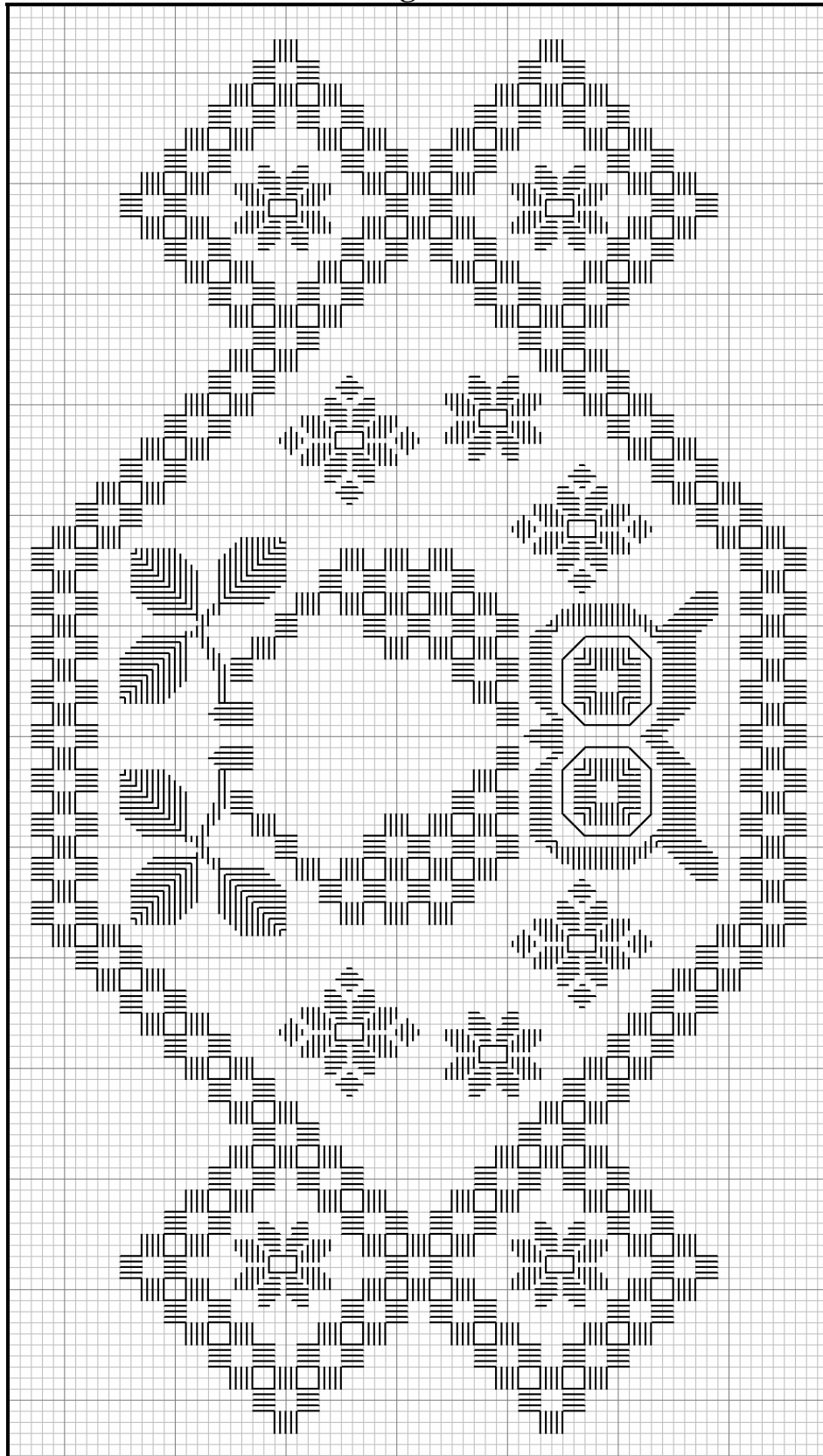


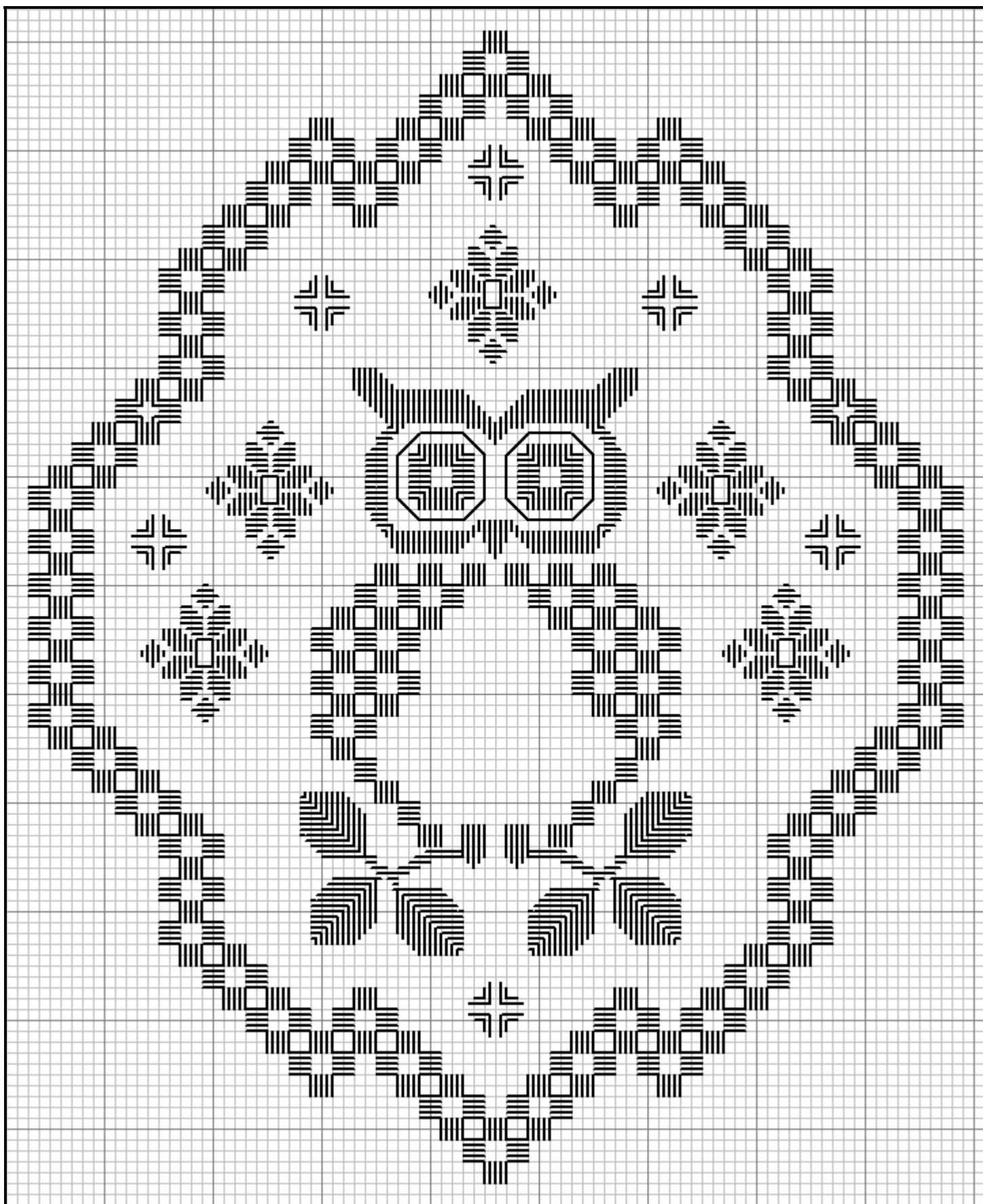
Graph below is for project in the photo



**1 square on the graph equals 2 fabric threads.**

### Other Design Variations



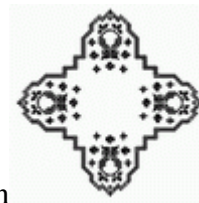
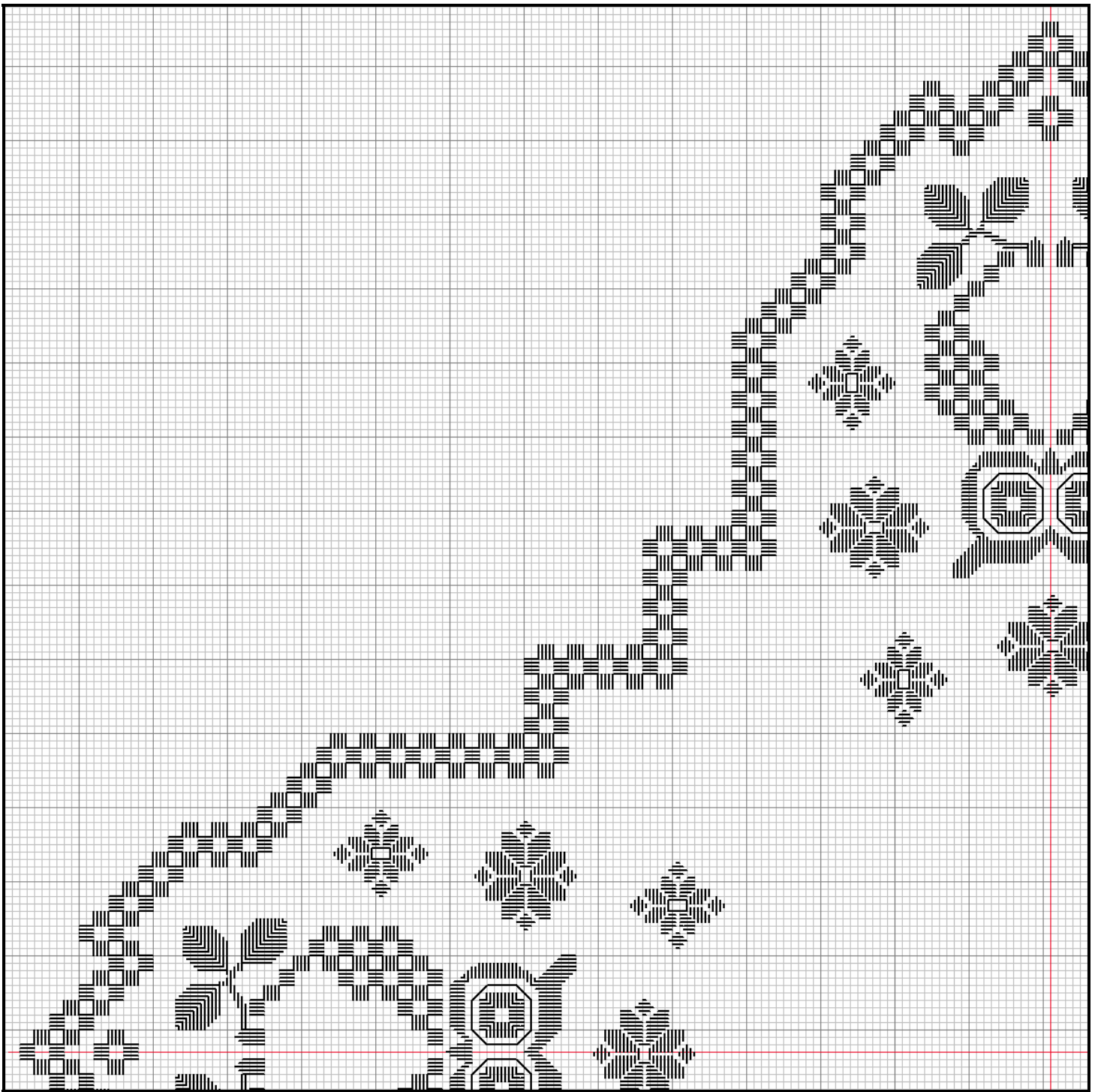






For this runner with an owl at each end, extend it to your required length from the red dotted lines.





Above chart show ¼ of this design